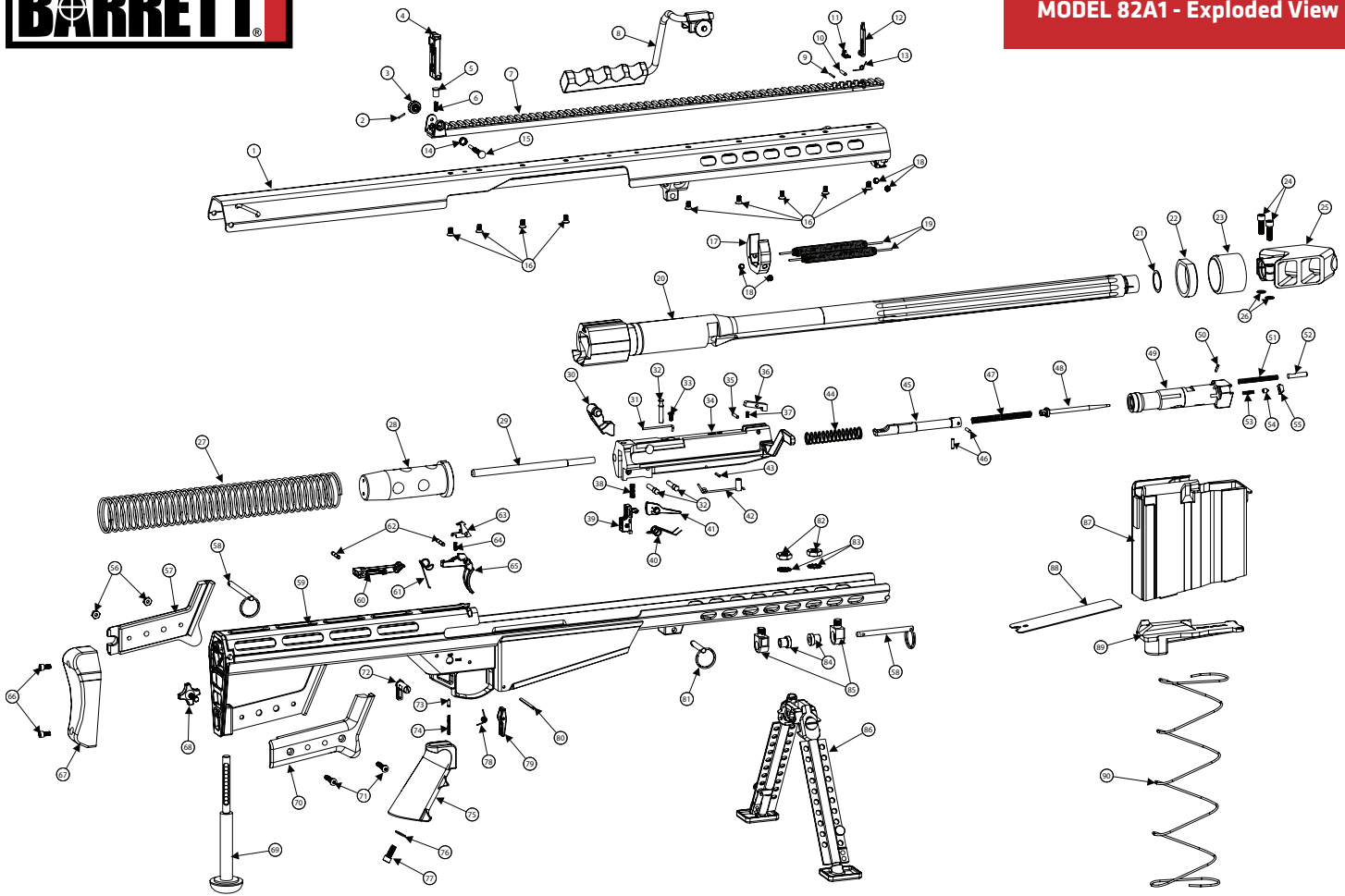




MODEL 82A1 - Exploded View



PART #	DESCRIPTION	QTY	PART #	DESCRIPTION	QTY	PART #	DESCRIPTION	QTY
1	Upper Receiver Complete	1	31	Accelerator Spring	1	61	Trigger Spring	1
2	Windage Screw Pin	1	32	Bolt Carrier Pin	3	62	Trigger Housing Pin	2
3	Windage Knob	1	33	Accelerator Spring Screw	1	63	Disconnecter	1
4	Rear Sight Assembly	1	34	Bolt Carrier Assembly	1	64	Disconnecter Spring	1
5	Rear Sight Base Detent	1	35	Bolt Latch Pin	1	65	Trigger	1
6	Rear Sight Detent Spring	1	36	Bolt Latch	1	66	Recoil Pad Screw	2
7	Scope Base Complete	1	37	Bolt Latch Spring	1	67	Recoil Pad	1
8	Carry Handle Assembly	1	38	Sear Assembly Spring	1	68	Lock Knob	1
9	Front Sight Catch Pin	1	39	Sear Assembly	1	69	Monopod Assembly	1
10	Front Sight Pin	1	40	Cocking Lever Spring	1	70	Rear Hand Grip - Right	1
11	Front Sight Catch	1	41	Cocking Lever	1	71	Rear Hand Grip Screw	2
12	Front Sight	1	42	Cam Pin Assembly	1	72	Safety Lever	1
13	Front Sight Spring	1	43	Cam Pin Pin	1	73	Safety Detent	1
14	Windage Screw Spring	1	44	Bolt Spring	1	74	Safety Detent Spring	1
15	Windage Screw	1	45	Firing Pin Extension	1	75	Pistol Grip	1
16	Scope Base Screw	9	46	Firing Pin Pin	2	76	Pistol Grip Washer	1
17	Barrel Key	1	47	Firing Pin Spring	1	77	Pistol Grip Screw	1
18	Barrel Spring Screw	4	48	Firing Pin	1	78	Magazine Catch Spring	1
19	Barrel Spring	2	49	Bolt Complete	1	79	Magazine Catch	1
20	Barrel Complete	1	50	Cam Pin Pin	1	80	Magazine Catch Pin	1
21	Shim, .50	1	51	Ejector Spring	1	81	Midlock Pin	1
22	Battery Bumper	1	52	Ejector	1	82	Bipod Yoke Mount Nut	1
23	Impact Bumper	1	53	Extractor Spring	1	83	Bipod Yoke Mount Washer	1
24	Muzzle Brake Screw	2	54	Extractor Plunger	1	84	Bipod Shim Bushing	2
25	Muzzle Brake	1	55	Extractor	1	85	Bipod Yoke Mount	2
26	Muzzle Brake Washer	2	56	Rear Hand Grip Nut	2	86	Bipod	1
27	Main Spring Assembly	1	57	Rear Hand Grip - Left	1	87	Magazine Body	1
28	Main Spring Buffer	1	58	Rear Lock Pin	2	88	Magazine Floor Plate	1
29	Accelerator Rod	1	59	Lower Receiver Complete	1	89	Magazine Follower	1
30	Accelerator	1	60	Transfer Bar Assembly	1	90	Magazine Spring	1