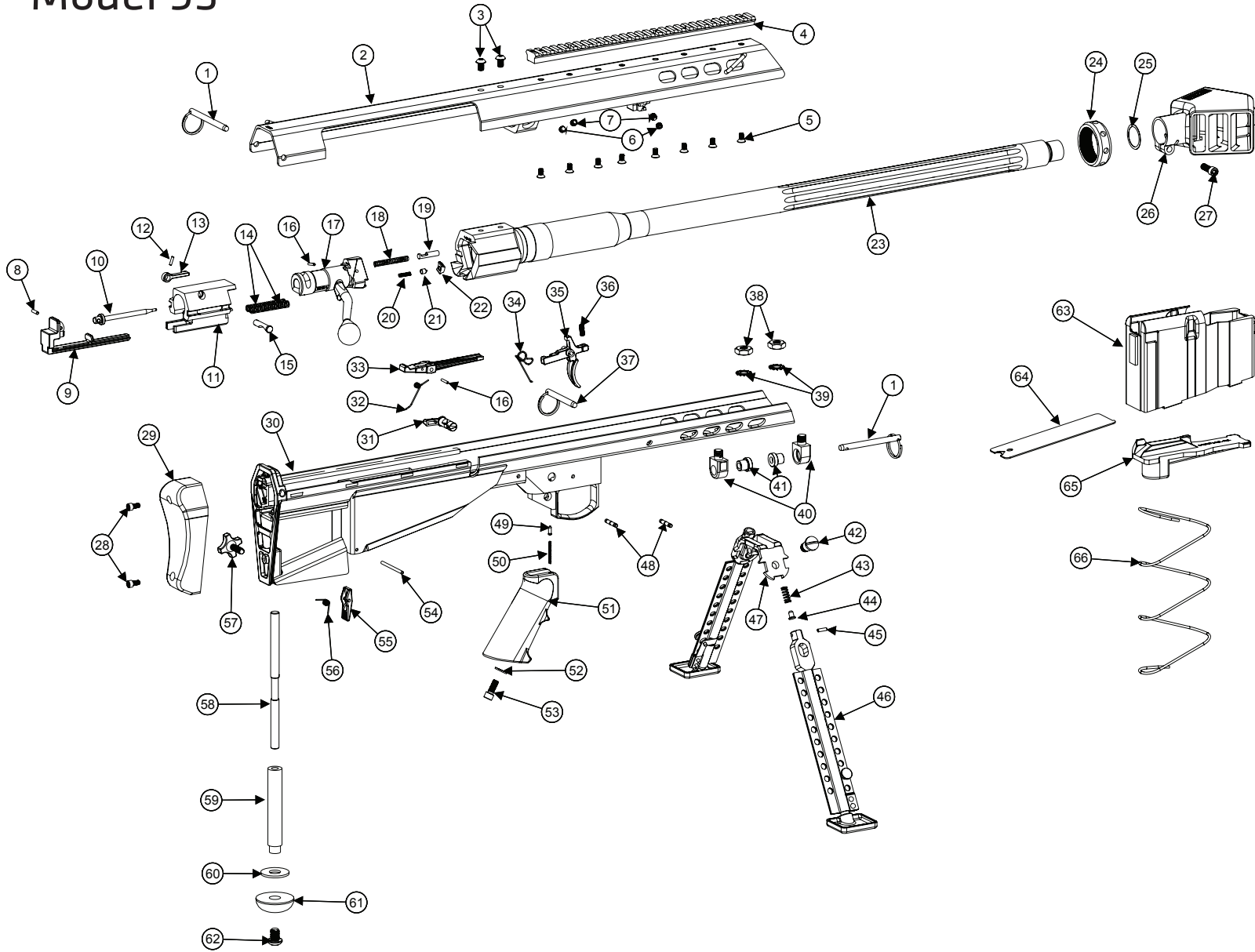




Model 95



PART NO.	DESCRIPTION	QTY.
1	Rear Lock Pin	2
2	Upper Receiver	1
3	Barrel Extension Screw	2
4	Elevated Scope Base	1
5	Scope Base Screw	8
6	Barrel Screw	2
7	Barrel Screw	2
8	DP .125 x .4375	1
9	Cocking Piece	1
10	Firing Pin	1
11	Bolt Carrier	1
12	RP .093 x .375	1
13	Bolt Pin Lever	1
14	Firing Spring	2
15	Bolt Pin	1
16	Cam Pin Pin	2
17	Bolt	1
18	Ejector Spring	1
19	Ejector	1
20	Extractor Spring	1
21	Extractor Plunger	1
22	Extractor	1
23	Barrel Complete	1
24	Barrel Lock Nut	1
25	Muzzle Brake Shim	1
26	Muzzle Brake	1
27	Muzzle Brake Screw	1
28	Recoil Pad Screw	2
29	Recoil Pad	1
30	Lower Receiver	1
31	Safety	1
32	Sear Spring	1
33	Sear	1
34	Trigger Spring	1
35	Trigger	1
36	Trigger Overtravel Screw	1
37	Front Lock Pin	1
38	Yoke Mount Nut	2
39	Yoke Mount Washer	2
40	Yoke Mount	2
41	Bipod Shim Bushing	2
42	Bipod Screw	2
43	Bipod Spring	2
44	Bipod Detent	2
45	Bipod Pin	2
46	Bipod Leg Complete	2
47	Bipod Yoke	1
48	Trigger Housing Pin	2
49	Safety Detent	1
50	Safety Spring	1
51	Pistol Grip	1
52	Pistol Grip Stock Washer	1
53	Pistol Grip Screw	1
54	Magazine Catch Pin	1
55	Magazine Catch	1
56	Magazine Catch Spring	1
57	Monopod Lock Knob	1
58	Monopod Elevation Screw	1
59	Elevation Collar	1
60	Monopod Foot Washer	1
61	Monopod Foot	1
62	Monopod Screw	1
63	Magazine Complete	1
64	Magazine Floor Plate	1
65	Magazine Follower	1
66	Magazine Spring	1